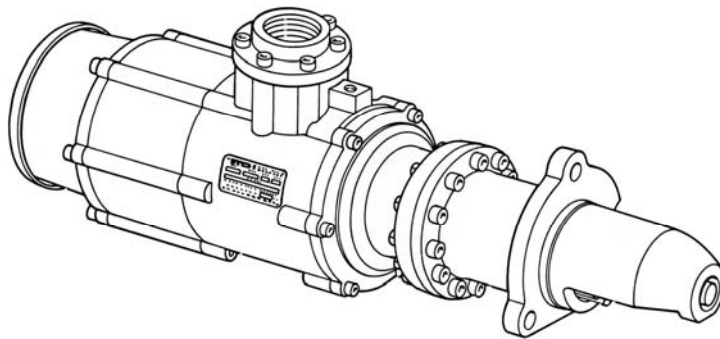


Exhaust Configurations



MODEL: T100 Series *TURBO***TWIN** Engine Air Starter

RJ Mann & Associates Inc.

Engine Controls & Panels/Compressor Parts

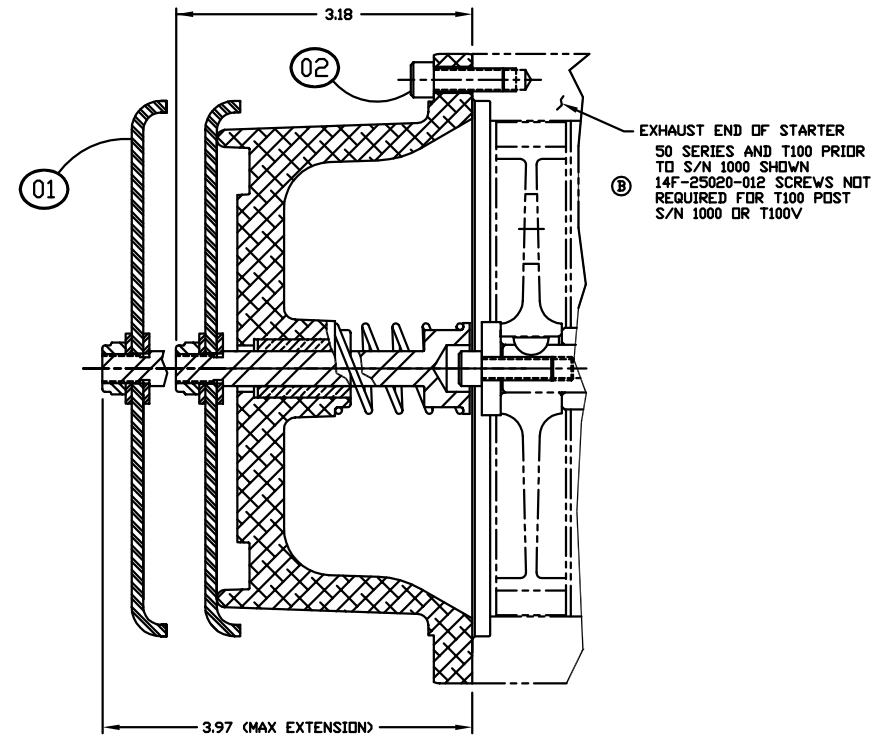
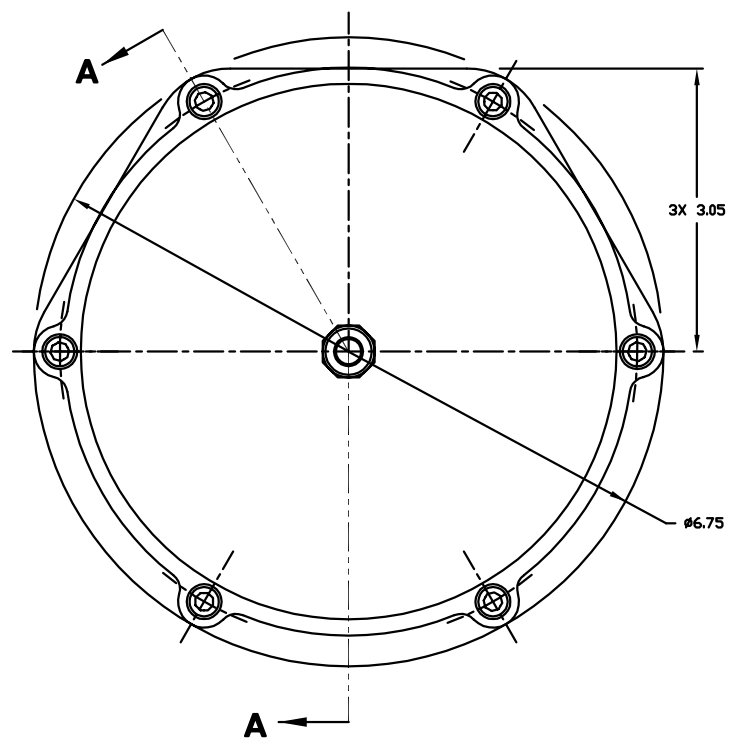
860 North 9th Avenue, Brighton, CO 80603

Ph: (303) 659-5139 Fax: (303) 659-5309

www.rjmann.com

REV 27068 B 1

APPLICATION				REVISION				APPROVAL			
PART NUMBER	USED ON	NEXT ASSEMBLY	QTY	ZONE	REV	DESCRIPTIONS	DRAWN	CHECKED	APPROVED	ARCHIVED	
T100-27068	50 SERIES T100 SERIES T100V SERIES	VARIOUS	1	-	-	RELEASED PER EN 5871	-	-	-	-	
52-405				A		REVISED PER EN 6201	RLF	S/DR	S/DR	S/R/FISTE 18JUL96	
				B		REVISED PER EN 7430	R.FISTE	S/BALSTER	S/BALSTER 08SEP99	S/R/FISTE 03SEP99	



SECTION A-A

6	14F-25020-012	SCREW	A-92501	02
1	2-27271	EXHAUST COVER ASSEMBLY	C-27271	01
-	52-405 T100-27068	EXHAUST COVER PLATE KIT	C-27068	-

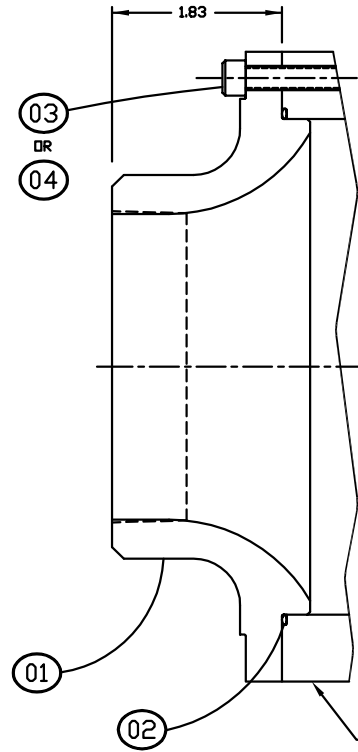
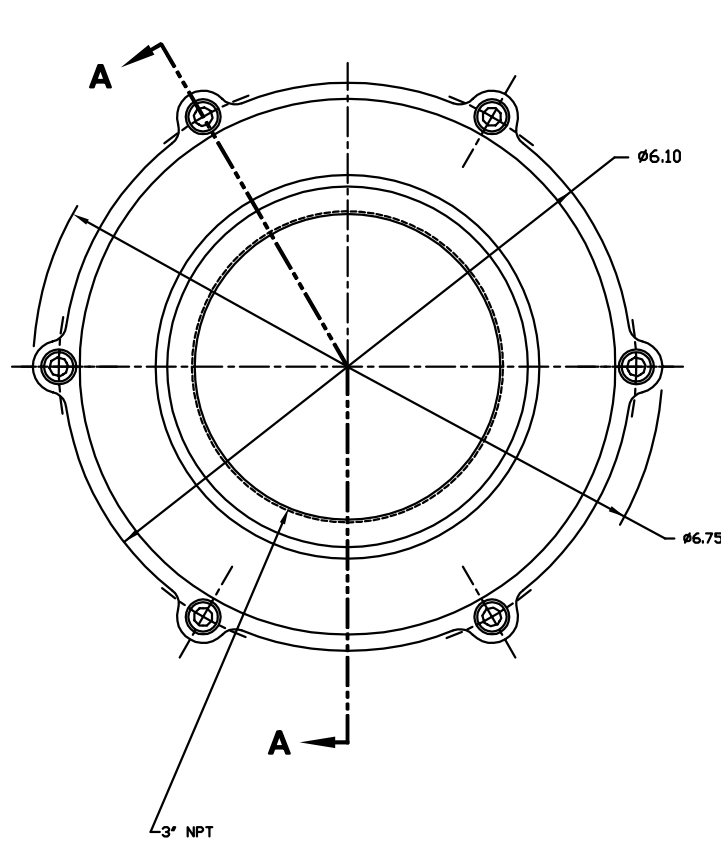
BASIC QTY.REQD	CAGE NUMBER	PART NUMBER OR IDENTIFYING NUMBER	NOMENCLATURE OR DESCRIPTION	MATERIAL/SPECIFICATION	DRAWING SIZE AND NUMBER	ITEM NO.
PARTS LIST						
CAUTION		TOLERANCES UNLESS OTHERWISE SPECIFIED	MATERIAL	COMPUTER GRAPHICS	CHANGE RESTRICTED	THIRD ANGLE PROJECTION
READ ALL NOTES BEFORE STARTING WORK		DECIMALS X ± .05 XX ± .01 XXX ± .005 XXXX ± .0002	HEAT TREAT	DOCUMENT CONTROL NUMBER: 127068DB.DWG	APPROVALS	DATE
REMOVE ALL BURRS		FRACTURES ± -	ALL SURFACE FINISHES UNLESS OTHERWISE NOTED	DRAWN R. FISTE	30OCT95	DWG TITLE
BREAK CORNERS AND ROUNDS UNLESS NOTED		ANGLES ± -	NO HLT SCALE	CHECKED S/G.PADGETT	30OCT95	EXHAUST COVER PLATE INSTALLATION/ASSEMBLY DRAWING
THIS DRAWING CONTAINS PROPRIETARY SUBJECT MATTER. IT IS NOT TO BE USED OR REPRODUCED, EITHER IN WHOLE OR IN PART, IN ANY MANNER WHATSOEVER, IN ABSENCE OF EXPRESS PERMISSION IN WRITING FROM TECH DEVELOPMENT, INC.						
DRAWN R. FISTE				DATE	30OCT95	SIZE
CHECKED S/G.PADGETT				DATE	30OCT95	CAGE CODE
ENGR S/G.PADGETT				DATE	30OCT95	DWG NO.
ISSUE APVD S/D.BALSTER				DATE	30OCT95	27068
SCALE 1/1				VT.		SHEET 1 OF 1

TDI TECH DEVELOPMENT, INC.
6800 Poe Avenue, Dayton, OH 45414
AEROSPACE • AUTOMOTIVE • COMMERCIAL • MARINE • AERONAUTICAL

REV B 27068

27651 - A30

APPLICATION				REVISION				APPROVAL			
PART NUMBER	USED ON	NEXT ASSEMBLY	QTY	ZONE	REV	DESCRIPTIONS	DRAWN	CHECKED	APPROVED	ARCHIVED	
T100-27651	T100	N/A	1		-	RELEASED PER EN 6354	-	-	-	S/R.FISTE 09DEC96	



NOTES:

- TORQUE 11F-25020-072 SCREW TO 100 IN.-LBS.
TORQUE 11F-25020-012 SCREW TO 100 IN.-LBS.

SECTION A-A

EXHAUST END OF T100 STARTER
AFTER S/N 9611-192 (USE ITEM #03 SCREWS)
OR WITH 2-26766 ADAPTER (USE ITEM #04 SCREWS)

6		11F-25020-028	SCREW	ALLOY STEEL	A-91502	04
6		11F-25020-072	SCREW	ALLOY STEEL	A-91502	03
1		9-90001-050	9-90001-050	BUNA -N- RUBBER	A-90001	02
1		2-26948	FLANGE, 3" NPT STRAIGHT EXHAUST CASTING 8-89045		C-26948	01
-		T100-27651	3" STRAIGHT NPT EXHAUST KIT		C-27651	-

BASIC QTY.REQD	CAGE NUMBER	PART NUMBER OR IDENTIFYING NUMBER	NOMENCLATURE OR DESCRIPTION	MATERIAL/SPECIFICATION	DRAWING SIZE AND NUMBER	ITEM NO.
----------------	-------------	-----------------------------------	-----------------------------	------------------------	-------------------------	----------

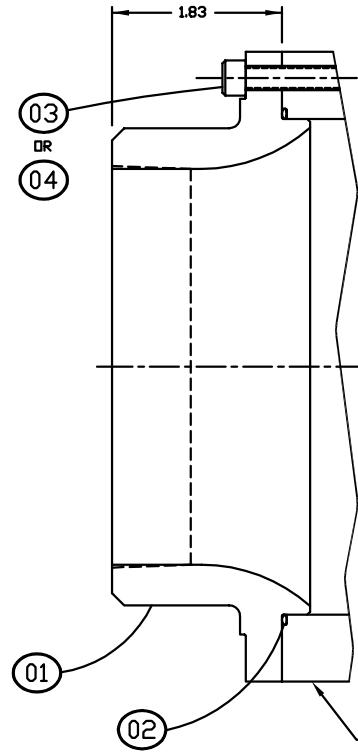
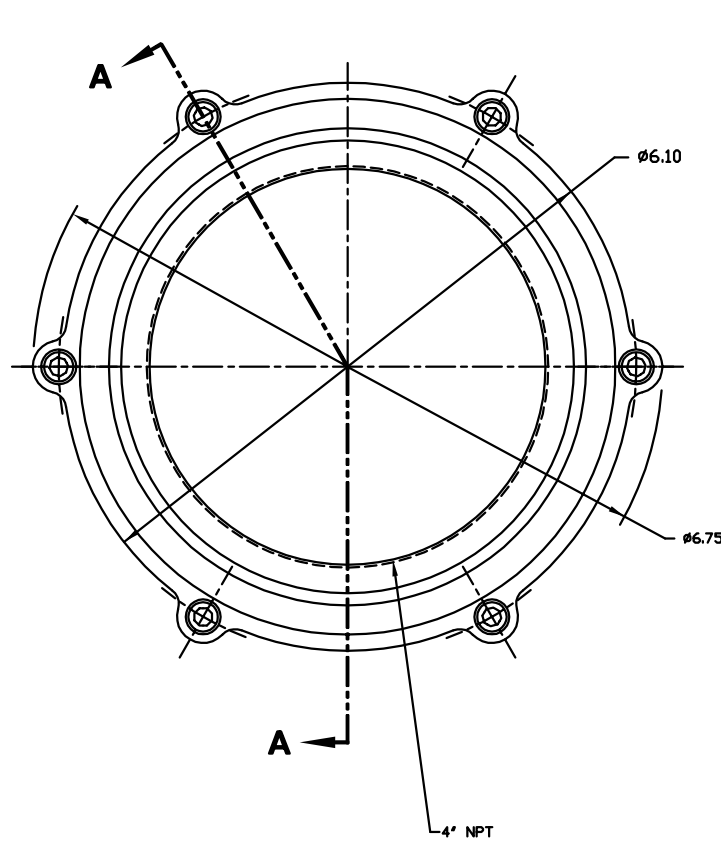
PARTS LIST

CAUTION READ ALL NOTES BEFORE STARTING WORK REMOVE ALL BURRS BREAK CORNERS AND ROUNDS UNLESS NOTED DO NOT SCALE	TOLERANCES UNLESS OTHERWISE SPECIFIED DECIMALS X ± .05 .XX ± .01 .XXX ± .005 .XXXX ± .0002	MATERIAL SEE PARTS LIST HEAT TREAT N/A ALL SURFACE FINISHES UNLESS OTHERWISE NOTED N/A ✓	COMPUTER GRAPHICS CHANGE RESTRICTED THIRD ANGLE PROJECTION	TDI TECH DEVELOPMENT, INC. 6800 Poe Avenue, Dayton, OH 45414 <small>AMERICAN-CALSONIC A COMMERCIAL AND RESIDENT COMMERCIAL DIVISION of Stebe company</small>
	DOCUMENT CONTROL NUMBER: 12765100.DWG APPROVALS: DRAWN R.FISTE, CHECKED S/D.BALSTER, ENGR S/D.BALSTER DATE: 06DEC96, 09DEC96, 09DEC96 DWG TITLE: 3" NPT STRAIGHT EXHAUST KIT FOR T100 SERIES INSTALLATION/ASSEMBLY DRAWING		SIZE: C CAGE CODE: 57301 DWG NO.: 27651	
THIS DRAWING CONTAINS PROPRIETARY SUBJECT MATTER. IT IS NOT TO BE USED OR REPRODUCED, EITHER IN WHOLE OR IN PART, IN ANY MANNER WHATSOEVER, IN ABSENCE OF EXPRESS PERMISSION IN WRITING FROM TECH DEVELOPMENT, INC.			ISSUE APVD S/D.BALSTER DATE: 09DEC96 SCALE: 1/1 VT.	SHEET 1 OF 1

REV - 27651

27652 - A30

APPLICATION				REVISION				APPROVAL			
PART NUMBER	USED ON	NEXT ASSEMBLY	QTY	ZONE	REV	DESCRIPTIONS	DRAWN	CHECKED	APPROVED	ARCHIVED	
T100-27652	T100	N/A	1	-	-	RELEASED PER EN 6354	-	-	-	S/R.FISTE 09DEC96	



NOTES:

- TORQUE 11F-25020-072 SCREW TO 100 IN.-LBS.
TORQUE 11F-25020-012 SCREW TO 100 IN.-LBS.

SECTION A-A

EXHAUST END OF T100 STARTER
AFTER S/N 9611-192 (USE ITEM #03 SCREWS)
OR WITH 2-26766 ADAPTER (USE ITEM #04 SCREWS)

QTY.REQD	BASIC	CAGE NUMBER	PART NUMBER OR IDENTIFYING NUMBER	NOMENCLATURE OR DESCRIPTION	MATERIAL/SPECIFICATION	DRAWING SIZE AND NUMBER	ITEM NO.
6			11F-25020-028	SCREW	ALLOY STEEL	A-91502	04
6			11F-25020-072	SCREW	ALLOY STEEL	A-91502	03
1			9-90001-050	9-90001-050	BUNA -N- RUBBER	A-90001	02
1			2-26950	FLANGE, 4' NPT STRAIGHT EXHAUST CASTING 8-89045		C-26950	01
-			T100-27652	4' STRAIGHT NPT EXHAUST KIT		C-27652	-

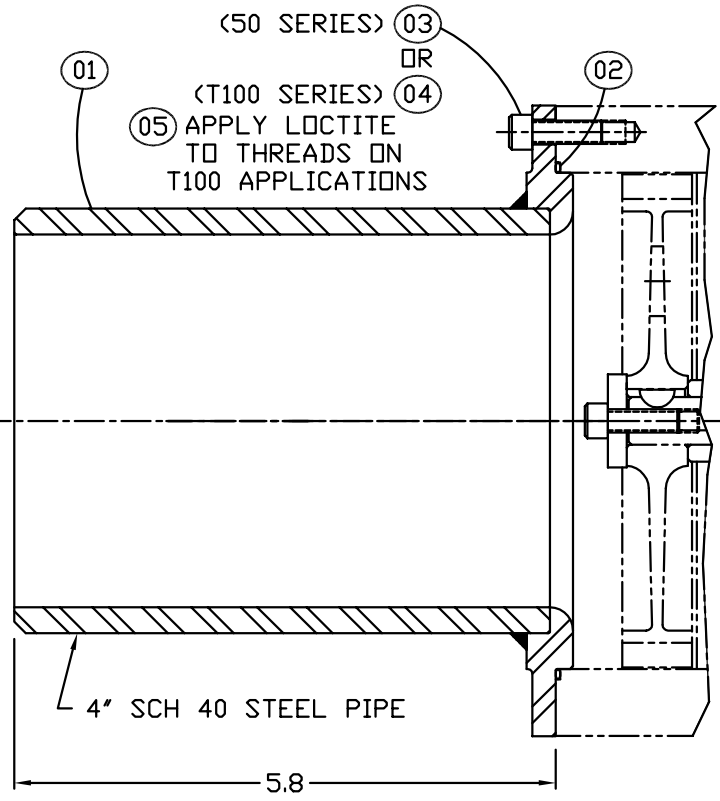
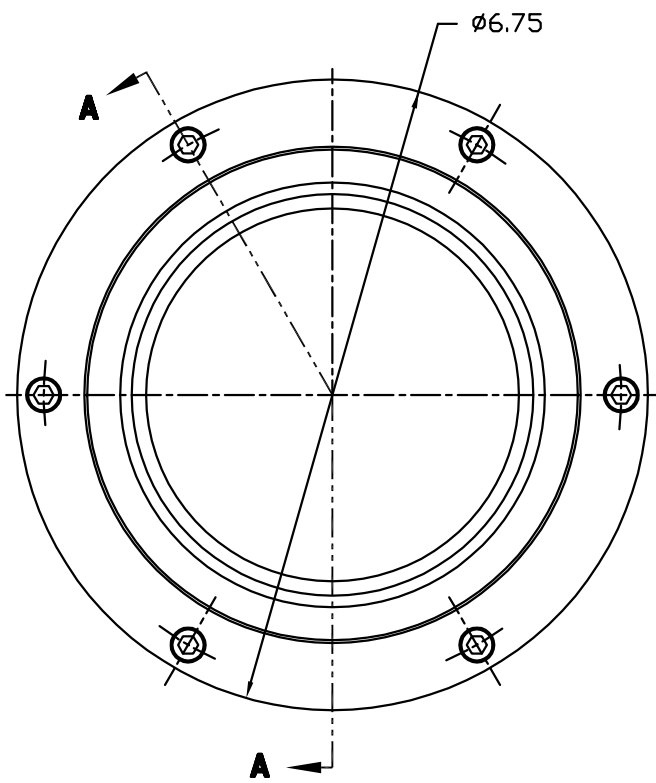
PARTS LIST							
CAUTION READ ALL NOTES BEFORE STARTING WORK REMOVE ALL BURRS BREAK CORNERS AND ROUNDS UNLESS NOTED DO NOT SCALE	TOLERANCES UNLESS OTHERWISE SPECIFIED DECIMALS X ± .05 XX ± .01 XXX ± .005 XXXX ± .0002 FRACTIONS ± - ANGLES ± -	MATERIAL SEE PARTS LIST HEAT TREAT N/A ALL SURFACE FINISHES UNLESS OTHERWISE NOTED N/A ✓	COMPUTER GRAPHICS CHANGE RESTRICTED DOCUMENT CONTROL NUMBER: 12765200.DWG	THIRD ANGLE PROJECTION	APPROVALS DRAWN R.FISTE CHECKED S/D.BALSTER ENGR S/D.BALSTER	DATE 06DEC96 09DEC96 09DEC96	DWG TITLE 4' NPT STRAIGHT EXHAUST KIT FOR T100 SERIES INSTALLATION/ASSEMBLY DRAWING
THIS DRAWING CONTAINS PROPRIETARY SUBJECT MATTER. IT IS NOT TO BE USED OR REPRODUCED, EITHER IN WHOLE OR IN PART, IN ANY MANNER WHATSOEVER, IN ABSENCE OF EXPRESS PERMISSION IN WRITING FROM TECH DEVELOPMENT, INC.					SIZE C	CAGE CODE 57301	DWG NO. 27652
					ISSUE APVD S/D.BALSTER	DATE 09DEC96	SCALE 1/1

TDI TECH DEVELOPMENT, INC.
6800 Poe Avenue, Dayton, OH 45414
AEROSPACE & COMMERCIAL AIRCRAFT PARTS MANUFACTURER
a Stribe company

REV - 27652

1627791 - 1

APPLICATION						REVISION		APPROVAL				
PART NUMBER	USED ON	NEXT ASSEMBLY	QTY	ZONE	REV	DESCRIPTIONS		DRAWN	DATE	CHECKED	APPROVED	ARCHIVED
T100-27791	T100/50'S	VARIOUS	1	-	-	RELEASED PER EN 6711		-	-	-	-	S/R/FISTE 10NDV97



SECTION A-A

BASIC QTY.REQD	CAGE NUMBER	PART NUMBER OR IDENTIFYING NUMBER	NOMENCLATURE OR DESCRIPTION	MATERIAL/SPECIFICATION	DRAWING SIZE AND NUMBER	ITEM NO.
1		9-94146-001	TUBE, THREAD ADHESIVE	LOCTITE 242	A-94146	05
6		11F-25020-072	SCREW, 1/4-20 UNC-2A X 4.50 LONG SHCS		A-91502	04
6		14F-25020-012	SCREW, 1/4-20 UNC-2A X .75 LONG SHCS		A-91502	03
1		9-90002-050	O-RING		A-92502	02
1		2-27741	FITTING, 4" PIPE		C-27741	01
-		T100-27791	4" PIPE EXHAUST FITTING KIT		C-27791	-

PARTS LIST						
BASIC QTY.REQD	CAGE NUMBER	PART NUMBER OR IDENTIFYING NUMBER	NOMENCLATURE OR DESCRIPTION	MATERIAL/SPECIFICATION	DRAWING SIZE AND NUMBER	ITEM NO.
<p>CAUTION READ ALL NOTES STARTING WITH WORK REMOVE ALL BURRS BREAK CORNERS AND NOTCHES UNLESS NOTED DO NOT SCALE</p> <p>TOLERANCES UNLESS OTHERWISE SPECIFIED</p> <p>DECIMALS: .X ± .05, .XX ± .01, .XXX ± .005, .XXXX ± .0002</p> <p>FRACTIONS: ± -</p> <p>ANGLES: ± -</p> <p>NO NOT SCALE</p> <p>THIS DRAWING CONTAINS PROPRIETARY SUBJECT MATTER, IT IS NOT TO BE USED OR REPRODUCED, EITHER IN WHOLE OR IN PART, IN ANY MANNER WHATSOEVER, IN ABSENCE OF EXPRESS PERMISSION IN WRITING FROM TECH DEVELOPMENT, INC.</p>						
<p>COMPUTER GRAPHICS</p> <p>CHANGE RESTRICTED</p> <p>HEAT TREAT: -</p> <p>ALL SURFACE FINISHES UNLESS OTHERWISE NOTED</p>			<p>DOCUMENT CONTROL NUMBER: 12779100.DWG</p> <p>APPROVALS: DRAWN R. FISTE 06NDV97, CHECKED S/S.SHE 10NDV97, ENGR S/S.SHE 10NDV97</p> <p>ISSUED BY: S/D.BALSTER 10NDV97</p>		<p>THIRD ANGLE PROJECTION</p> <p>TDI TECH DEVELOPMENT, INC. 6800 Poe Avenue, Dayton, OH 45414 AEROSPACE QUALITY ASSURANCE AND REPAIR COMPANY SYSTEM a Sabe company</p> <p>DATE: 06NDV97</p> <p>DWG TITLE: 4" PIPE EXHAUST FITTING ENVELOPE/KIT DRAWING</p> <p>SIZE: C, CAGE CODE: 57301, DWG NO.: 27791</p> <p>SCALE: 1/1, VT.</p>	

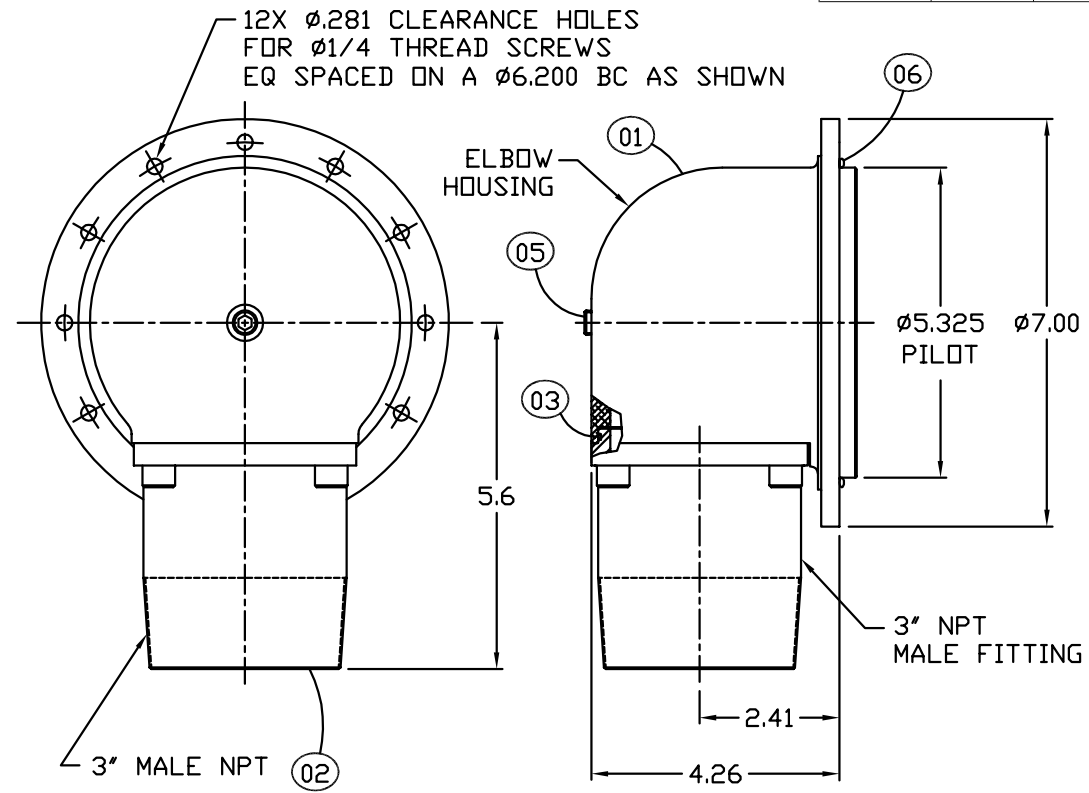
REV - 27791

006LZ B A38

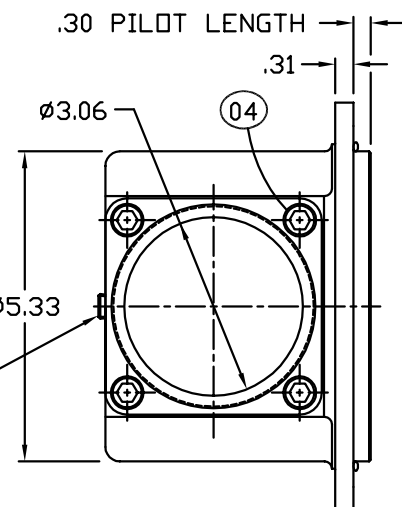
APPLICATION				REVISION				APPROVAL			
PART NUMBER	USED ON	NEXT ASSEMBLY	QTY	ZONE	REV	DESCRIPTIONS	DRAWN	CHECKED	APPROVED	ARCHIVED	
C-27900	-	-	-	-	-	RELEASED PER EN 6628	-	-	-	S/R.FISTE 18SEP97	
				A		REVISED PER EN 6690	R.FISTE 25OCT97	S/S.SHE 27OCT97	S/DMLSTER 27OCT97	S/R.FISTE 27OCT97	
				B		REVISED PER EN 7840	R.FISTE 20SEP90	S/DMLSTER 22SEP90	S/DMLSTER 22SEP90	S/R.FISTE 22SEP90	

NOTES:

1. THE ELBOW HOUSING MAY BE ROTATED EVERY 30° FOR A CHOICE OF 12 DIFFERENT ANGULAR POSITIONS RELATIVE TO THE STARTER DRIVE OPENING.
2. IT IS NECESSARY TO FIRST ASSEMBLE THE ELBOW HOUSING TO THE STARTER AT THE DESIRED ANGULAR LOCATION. APPLY LOCTITE 290 (TDI P/N 9-94146-001) TO THE THREADS OF THE HEX SCREW SECURING THE ELBOW TO THE EXHAUST END OF THE STARTER.
3. APPLY PIPE THREAD SEALANT WHEN INSTALLING PIPE PLUG (ITEM #05).
4. APPLY O-RING GREASE WHEN INSTALLING O-RING (ITEM #03).
5. TORQUE SCREWS (ITEM #04) TO 170 IN-LBS. WHEN INSTALLING 3" NPT FITTING (ITEM #02).
6. THIS ELBOW INSTALLS DIRECTLY TO ANY T100 STARTER BUILT AFTER SERIAL NUMBER 9611-192. IT ALSO FITS ANY T100 STARTER FITTED WITH ADAPTER RING 2-26766.



NOTE:
 ELBOW MUST BE ASSEMBLED WHILE INSTALLING TO STARTER IN ORDER TO ACCESS HEX SCREWS SECURING ELBOW TO STARTER EXHAUST



BASIC QTY.REQD	CAGE NUMBER	PART NUMBER OR IDENTIFYING NUMBER	NOMENCLATURE OR DESCRIPTION	MATERIAL/SPECIFICATION	DRAWING SIZE AND NUMBER	ITEM NO.
1		9-90002-050	O-RING		A-90002	06
1		9-93501-003	PLUG		A-93501	05
1		14F-37516-016	SCREW		A-92501	04
1		9-90002-041	O-RING		A-90002	03
1		2-27721	FITTING, 3" MALE NPT		C-27721	02
1		2-27720	HOUSING, ELBOW		D-27720	01
-		T100-27900	3" NPT MALE EXHAUST ELBOW KIT		C-27900	-

CAUTION		TOLERANCES UNLESS OTHERWISE SPECIFIED	MATERIAL	COMPUTER GRAPHICS	CHANGE RESTRICTED	THIRD ANGLE PROJECTION
READ ALL NOTES	DECIMALS	N/A	N/A	DOCUMENT CONTROL NUMBER: 127900DB.DWG	APPROVALS	DATE
STARTING WORK	X .05	HEAT TREAT	N/A	DRAWN	R.FISTE	17SEP97
REMOVE ALL BURRS	X .01	ALL SURFACE FINISHES UNLESS OTHERWISE NOTED	N/A	CHECKED	S/S. SHE	18SEP97
BREAK CORNERS AND ROUNDS UNLESS NOTED	X .0001			ENGR	S/S. SHE	18SEP97
NO NET SCALE						
THIS DRAWING CONTAINS PROPRIETARY SUBJECT MATTER. IT IS NOT TO BE USED OR REPRODUCED, EITHER IN WHOLE OR IN PART, IN ANY MANNER WHATSOEVER, IN ABSENCE OF EXPRESS PERMISSION IN WRITING FROM TECH DEVELOPMENT, INC.						
<p>6800 Poe Avenue, Dayton, OH 45414</p>				<p>DWG TITLE: T100 EXHAUST ELBOW KIT 3" MALE NPT</p>		
SIZE: C		CAGE CODE: 57301		DWG NO: 27900		
ISSUE APVD S/D. BALSTER 18SEP97				SCALE: NONE		VT.
						SHEET 1 OF 1

REV 27900

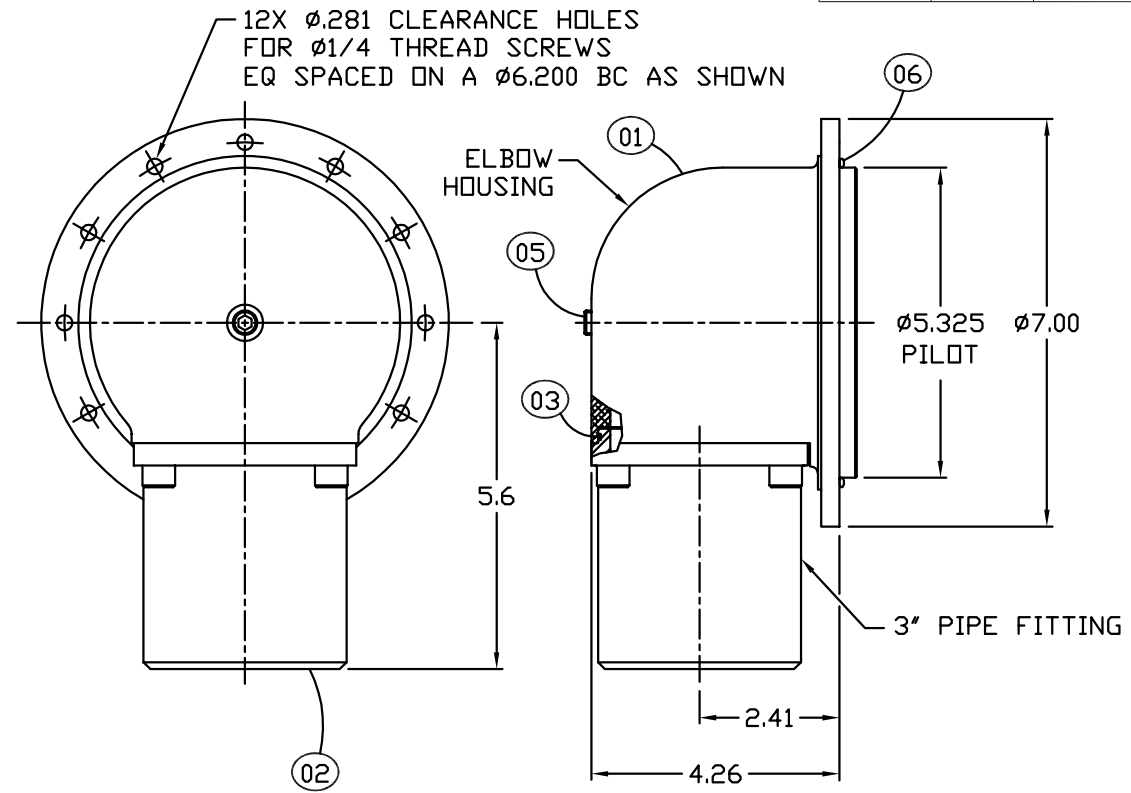
A

2108Z V A38

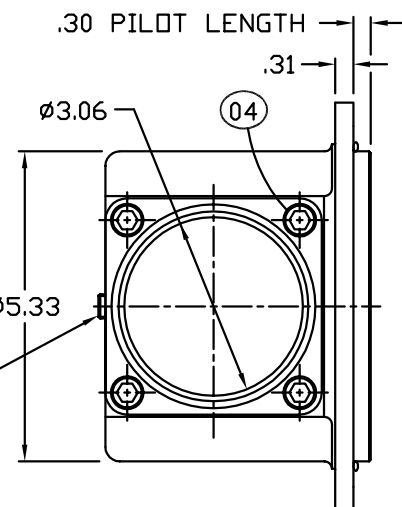
APPLICATION				REVISION				APPROVAL			
PART NUMBER	USED ON	NEXT ASSEMBLY	QTY	ZONE	REV	DESCRIPTIONS	DRAWN	CHECKED	APPROVED	ARCHIVED	
C-28012	-	-	-	-	-	RELEASED PER EN 6818	-	-	-	S/R.FISTE 20JAN99	
				A		REVISED PER EN 7840	R.FISTE 20SEP00	S/D.BALSTER 22SEP00	S/D.BALSTER 22SEP00	S/R.FISTE 22SEP00	

NOTES:

1. THE ELBOW HOUSING MAY BE ROTATED EVERY 30° FOR A CHOICE OF 12 DIFFERENT ANGULAR POSITIONS RELATIVE TO THE STARTER DRIVE OPENING.
2. IT IS NECESSARY TO FIRST ASSEMBLE THE ELBOW HOUSING TO THE STARTER AT THE DESIRED ANGULAR LOCATION. APPLY LOCTITE 290 (TDI P/N 9-94146-001) TO THE THREADS OF THE HEX SCREW SECURING THE ELBOW TO THE EXHAUST END OF THE STARTER.
3. APPLY PIPE THREAD SEALANT WHEN INSTALLING PIPE PLUG (ITEM #05).
4. APPLY O-RING GREASE WHEN INSTALLING O-RING (ITEM #03).
5. TORQUE SCREWS (ITEM #04) TO 170 IN-LBS. WHEN INSTALLING 3" NPT FITTING (ITEM #02).
6. THIS ELBOW INSTALLS DIRECTLY TO ANY T100 STARTER BUILT AFTER SERIAL NUMBER 9611-192. IT ALSO FITS ANY T100 STARTER FITTED WITH ADAPTER RING 2-26766.



NOTE:
ELBOW MUST BE ASSEMBLED WHILE INSTALLING TO STARTER IN ORDER TO ACCESS HEX HEAD SCREWS SECURING ELBOW TO STARTER EXHAUST



Ⓐ PLUGGED 1/4 NPT PORT FOR PRESSURE CHECK

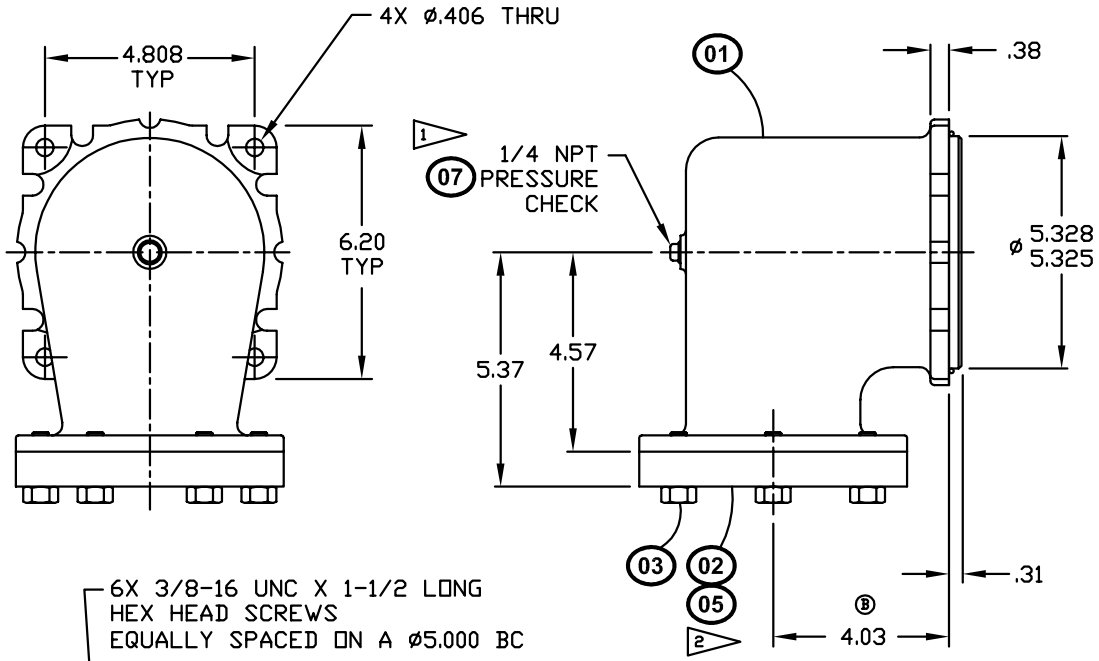
BASIC QTY.REQD	CAGE NUMBER	PART NUMBER OR IDENTIFYING NUMBER	NOMENCLATURE OR DESCRIPTION	MATERIAL/SPECIFICATION	DRAWING SIZE AND NUMBER	ITEM NO.
1		9-90002-050	O-RING		A-90002	06
1		9-93501-003	PLUG		A-93501	05
1		14F-37516-016	SCREW		A-92501	04
1		9-90002-041	O-RING		A-90002	03
1		2-28011	FITTING, 3" PIPE		C-28011	02
1		2-27720	HOUSING, ELBOW		C-27720	01
-		T100-28012	3" PIPE EXHAUST ELBOW KIT		C-28012	-

CAUTION	TOLERANCES UNLESS OTHERWISE SPECIFIED DECIMALS X .05 XX .01 XXX .005 XXXX .0002	MATERIAL N/A	COMPUTER GRAPHICS	CHANGE RESTRICTED	THIRD ANGLE PROJECTION	TDI TECH DEVELOPMENT, INC. 6800 Poe Avenue, Dayton, OH 45414 <small>TDI is a registered service mark of Tech Development, Inc. a Stryker company.</small>
READ ALL NOTES BEFORE STARTING WORK	FRACTIONS ± - ANGLES ± - DO NOT SCALE	HEAT TREAT N/A	DOCUMENT CONTROL NUMBER 128012DA.DWG	APPROVALS	DATE	
REMOVE ALL BURRS		ALL SURFACE FINISHES UNLESS OTHERWISE NOTED N/A		DRAWN R.FISTE	21JAN98	DWG TITLE T100 EXHAUST ELBOW KIT 3" PIPE
BREAK CORNERS AND ROUNDS UNLESS NOTED				CHECKED S/D.BALSTER	29JAN98	SIZE C
NO HLT SCALE				ENGR S/D.BALSTER	29JAN98	CAGE CODE 57301
THIS DRAWING CONTAINS PROPRIETARY SUBJECT MATTER. IT IS NOT TO BE USED OR REPRODUCED, EITHER IN WHOLE OR IN PART, IN ANY MANNER WHATSOEVER, IN ABSENCE OF EXPRESS PERMISSION IN WRITING FROM TECH DEVELOPMENT, INC.			ISSUE APVD S/D.BALSTER	30JAN98	SCALE NONE	DWG NO. 28012

REV A 28012

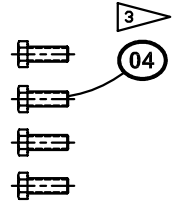
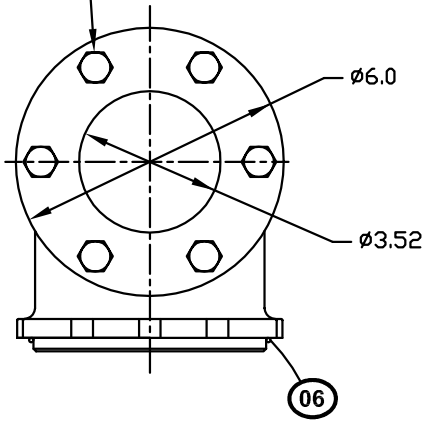
28182 B

APPLICATION				REVISION				APPROVAL			
PART NUMBER	USED ON	NEXT ASSEMBLY	QTY	ZONE	REV	DESCRIPTIONS	DRAWN	CHECKED	APPROVED	ARCHIVED	
T100-28182-001	T100V	D-60031	1		A	REDRAWN AND REVISED PER EN 7897	R.FISTE	S/S.BALSTER	S/S.BALSTER	S/S.FISTE	
T100-28182-002	T100V	D-60031	1		B	REVISED PER EN 8032	S/JAB	S/B.J.S.	S/B.J.S.	S/JAB	



- NOTES:
1. INSTALL PIPE PLUG 9-93501-003 INTO EXHAUST ELBOW 2-27738. APPLY 9-94085 PIPE THREAD SEALANT.
 2. O-RING (ITEM #05) NOT PICTORIALLY SHOWN. IT IS INSTALLED IN ITEM #02 (WELD FLANGE) TO SEAL THE MOUNT SURFACE OF ITEM #01 (ELBOW).
 3. THESE SCREWS FOR INSTALLING ELBOW HOUSING TO THE T100V STARTER.

6X 3/8-16 UNC X 1-1/2 LONG HEX HEAD SCREWS EQUALLY SPACED ON A Ø5.000 BC



QTY	REQD	CAGE NUMBER	PART NUMBER OR IDENTIFYING NUMBER	NOMENCLATURE OR DESCRIPTION	MATERIAL/SPECIFICATION	DRAWING SIZE AND NUMBER	ITEM NO.
1	1		9-94146-001	ADHESIVE, LOCTITE 242 THREAD (<5 ML TUBE)		A-94146	08
1	1		9-93501-003	PLUG, PIPE		A-93501	07
1	1		9-90001-050	O-RING		A-90001	06
1	1		9-90001-046	O-RING		A-90001	05
4	4		71F-37516-016	SCREW, HEX HEAD (3/8-16 X 1" LG)		A-92507	04
6	6		71F-37516-024	SCREW, HEX HEAD (3/8-16 X 1-1/2 LG)		A-92507	03
1	1		2-27740	FLANGE, 3" PIPE WELD		C-27740	02
1	1		2-27738	ELBOW, EXHAUST		E-27738	01
-	-		T100-28182-002	T100V EXHAUST ELBOW KIT		C-28182	-
-	-		T100-28182-001	T100V EXHAUST ELBOW KIT W/WELD FLANGE		C-28182	-

CAUTION READ ALL NOTES STARTING WORK REMOVE ALL BURRS BREAK CORNERS AND ROUNDS UNLESS NOTED DO NOT SCALE

TOLERANCES UNLESS OTHERWISE SPECIFIED
 DECIMALS: .05, .01, .005, .0002
 FRACTIONS: ± 1/16", ± 0°30'

MATERIAL: -
 HEAT TREAT: -
 ALL SURFACE FINISHES UNLESS OTHERWISE NOTED: ✓

COMPUTER GRAPHICS
 CHANGE RESTRICTED
 DOCUMENT CONTROL NUMBER: 128182DB.DWG
 APPROVALS: R.FISTE, S/S.SHE, S/S.SHE
 DATE: 15JUL98, 15JUL98, 15JUL98

TECH DEVELOPMENT, INC
 8800 Poe Avenue, Dayton, Oh 45414

T100V EXHAUST ELBOW KIT

SIZE: C, CAGE CODE: 57301, DWG NO: 28182, SCALE: NONE, VT, SHEET 1 OF 1

4

3

2

1

4

3

2

1

1998 B A38

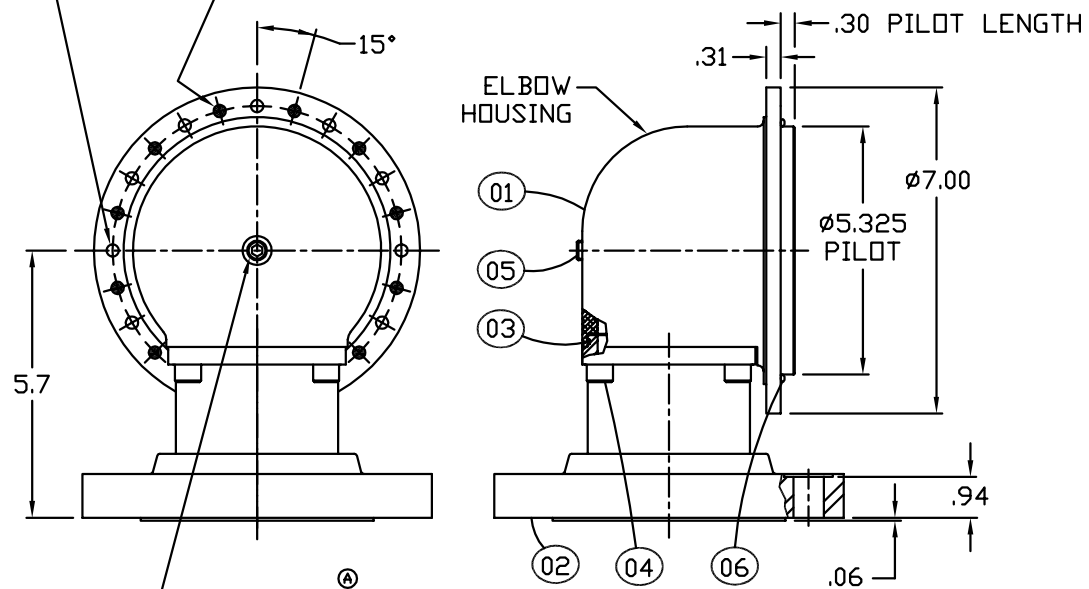
APPLICATION				REVISION				APPROVAL			
PART NUMBER	USED ON	NEXT ASSEMBLY	QTY	ZONE	REV	DESCRIPTIONS	DRAWN	CHECKED	APPROVED	ARCHIVED	
T100-28567	50/T00	VARIOUS	1		-	RELEASED PER EN 7623	-	-	-	S/R.FISTE 10MAR00	
T100-28567-001	T100DP	D-60077	1		A	REVISED PER EN 7840	R.FISTE 20SEP00	S/D.BALSTER 20SEP00	S/D.BALSTER 20SEP00	S/R.FISTE 20SEP00	
					B	REVISED PER EN 8207	R.FISTE 05NOV00	S/D.BALSTER 05NOV00	S/D.BALSTER 05NOV00	S/R.FISTE 05NOV00	

PART NUMBER T100-28567 ONLY:
 12X Ø.281 CLEARANCE HOLES
 FOR Ø1/4 THREAD SCREWS
 EQ SPACED ON A Ø6.200 BC AS SHOWN

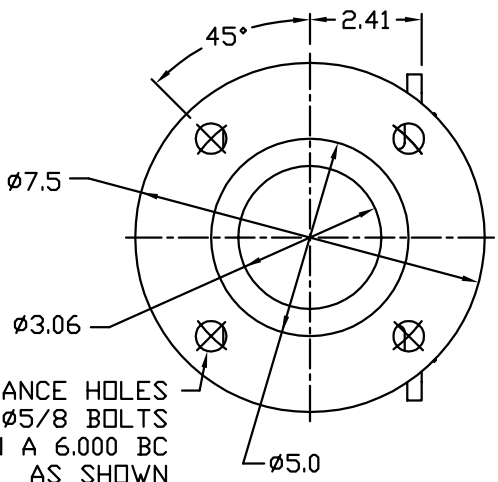
PART NUMBER T100-28567-001 ONLY:
 12X Ø.281 CLEARANCE HOLES
 FOR Ø1/4 THREAD SCREWS
 EQ SPACED ON A Ø6.200 BC AS SHOWN

NOTES:

1. THE ELBOW HOUSING MAY BE ROTATED EVERY 30° FOR A CHOICE OF 12 DIFFERENT ANGULAR POSITIONS RELATIVE TO THE STARTER DRIVE OPENING.
2. IT IS NECESSARY TO FIRST ASSEMBLE THE ELBOW HOUSING TO THE STARTER AT THE DESIRED ANGULAR LOCATION. APPLY LOCTITE 290 (TDI P/N 9-94146-001) TO THE THREADS OF THE HEX SCREWS SECURING THE ELBOW TO THE EXHAUST END OF THE STARTER. TORQUE SCREWS TO 113 IN-BS.
3. APPLY PIPE THREAD SEALANT WHEN INSTALLING PIPE PLUG (ITEM #05).
4. APPLY O-RING GREASE WHEN INSTALLING O-RING (ITEM #03).
5. TORQUE SCREWS (ITEM #04) TO 170 IN-LBS. WHEN INSTALLING 3" FLANGED FITTING (ITEM #02).
6. THIS ELBOW INSTALLS DIRECTLY TO ANY T100 STARTER BUILT AFTER SERIAL NUMBER 9611-192. IT ALSO FITS ANY T100 STARTER FITTED WITH ADAPTER RING 2-26766.



PLUGGED 1/4 NPT PORT FOR PRESSURE CHECK



4X CLEARANCE HOLES FOR Ø5/8 BOLTS
 EQ SPACED ON A 6.000 BC AS SHOWN

QTY	DESCRIPTION	PART NUMBER OR IDENTIFYING NUMBER	NOMENCLATURE OR DESCRIPTION	MATERIAL/SPECIFICATION	DRAWING SIZE AND NUMBER	ITEM NO.
1	D-RING	9-90002-050	D-RING		A-90002	06
1	PLUG	9-93501-003	PLUG		A-93501	05
1	SCREW	14F-37516-016	SCREW		A-92501	04
1	D-RING	9-90002-041	D-RING		A-90002	03
1	FITTING, 3" PIPE	2-28565	FITTING, 3" PIPE		C-28565	02
1	HOUSING, ELBOW (T100DP)	2-27720-001	HOUSING, ELBOW (T100DP)		D-27720	01
1	HOUSING, ELBOW	2-27720	HOUSING, ELBOW		D-27720	01
-	3" FLANGED EXHAUST ELBOW KIT (T100DP)	T100-28567-001	3" FLANGED EXHAUST ELBOW KIT (T100DP)		C-28567	-
-	3" FLANGED EXHAUST ELBOW KIT	T100-28567	3" FLANGED EXHAUST ELBOW KIT		C-28567	-

QTY	BASIC NUMBER	CAGE NUMBER	PART NUMBER OR IDENTIFYING NUMBER	NOMENCLATURE OR DESCRIPTION	MATERIAL/SPECIFICATION	DRAWING SIZE AND NUMBER	ITEM NO.
-----	--------------	-------------	-----------------------------------	-----------------------------	------------------------	-------------------------	----------

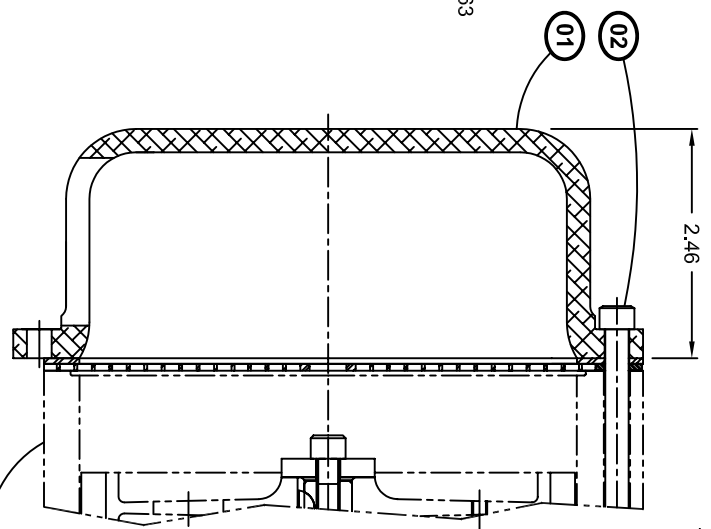
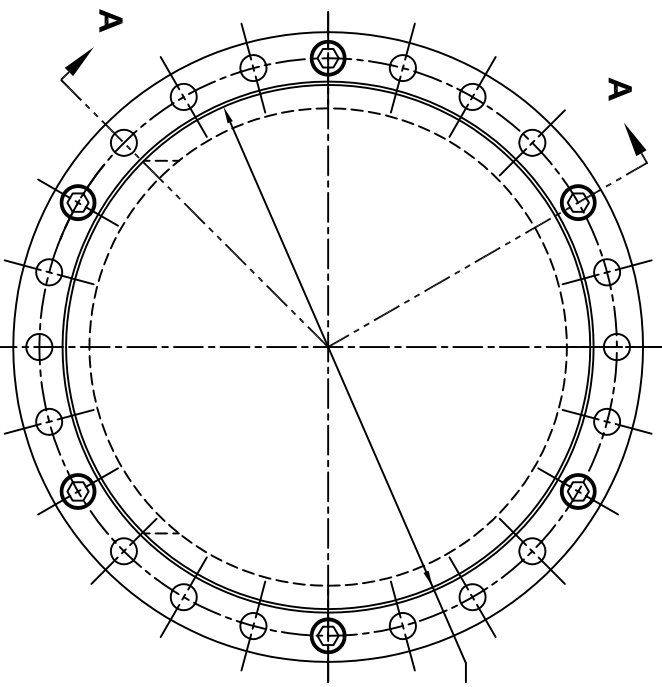
CAUTION		TOLERANCES UNLESS OTHERWISE SPECIFIED	MATERIAL	COMPUTER GRAPHICS	CHANGE RESTRICTED	THIRD ANGLE PROJECTION	<p>6800 Poe Avenue, Dayton, OH 45414</p>
READ ALL NOTES BEFORE STARTING WORK	DECIMALS	N/A	N/A	DOCUMENT CONTROL NUMBER: 128567DB.DWG	APPROVALS	DATE	
REMOVE ALL BURRS	.X ± .05 .XX ± .01 X.XX ± .005 X.XXX ± .0002	HEAT TREAT	N/A	R.FISTE	S/D.BALSTER	09MAR00	
BREAK CORNERS AND ROUNDS UNLESS NOTED	FRACTIONS ± - ANGLES ± -	NO NOT SCALE	N/A	CHECKED	S/D.BALSTER	10MAR00	
THIS DRAWING CONTAINS PROPRIETARY SUBJECT MATTER. IT IS NOT TO BE USED OR REPRODUCED, EITHER IN WHOLE OR IN PART, IN ANY MANNER WHATSOEVER, IN ABSENCE OF EXPRESS PERMISSION IN WRITING FROM TECH DEVELOPMENT, INC.				ISSUE APPROVED	S/D.BALSTER	10MAR00	<p>3" FLANGED EXHAUST ELBOW KIT</p> <p>SIZE C CAGE CODE 57301 DWG NO. 28567</p>

APPLICATION				REVISION				APPROVAL			
PART NUMBER	USED IN	NEXT ASSEMBLY	QTY	ZONE	REV	DESCRIPTIONS	DRAWN	CHECKED	APPROVED	ARCHIVED	
T100-29204	T100/T100V	VARIANTS	-	-	-	RELEASED PER EN 9509	-	-	-	28 JANOS	
				A		REVISED PER EN 9540					

40262 A 1

NOTES:

1. 11F-25020-072 SCREW:
APPLY LOCTITE 242 (9-94146-001) TO THE
THREADS AND TORQUE TO 150 IN-LBS.

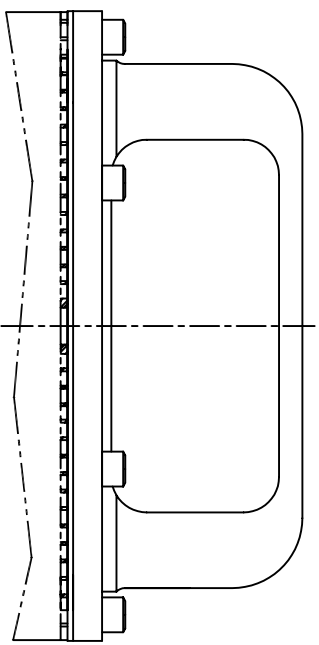


CENTERLINE OF EXHAUST OPENING
MAY BE LOCATED AT (24) DIFFERENT
15° INCREMENTAL LOCATIONS

SECTION A-A

T100 SERIES TURBINE ASSEMBLY EXHAUST
SHOWN IN PHANTOM

QTY/REQD	BASIC NUMBER	CAGE NUMBER	PART NUMBER OR IDENTIFYING NUMBER	NOMENCLATURE OR DESCRIPTION	MATERIAL/SPECIFICATION	DRAWING SIZE AND NUMBER	ITEM NO.
1			T100-29204	T100 SERIES EXHAUST DEFLECTOR KIT		C-29204	-
6			11F-25020-072	SCREW/		A-92501	02
1			2-29205	HOUSING, EXHAUST DEFLECTOR		C-29205	01

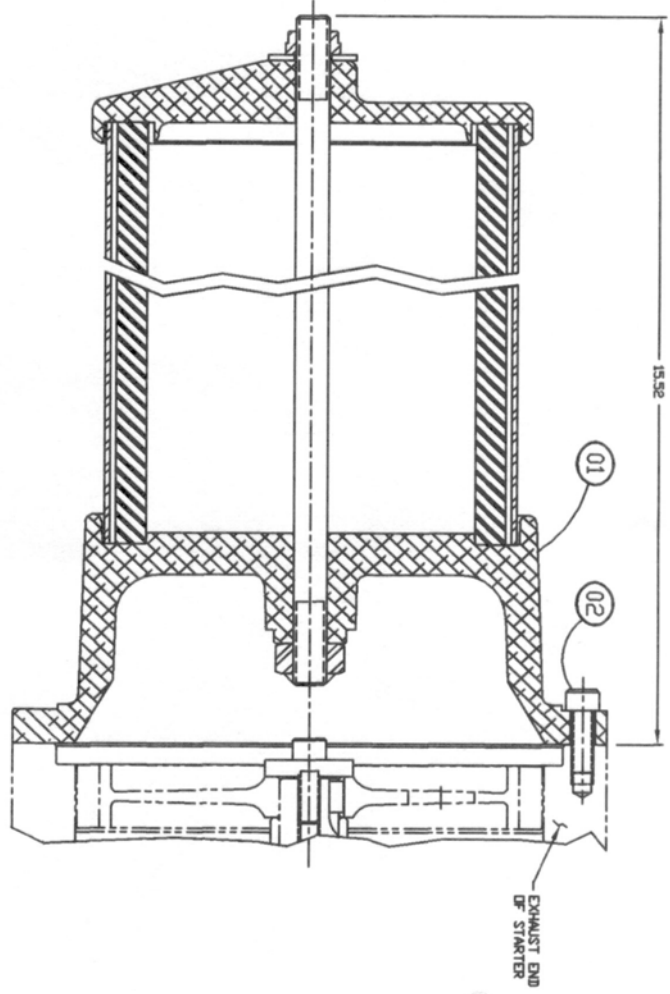
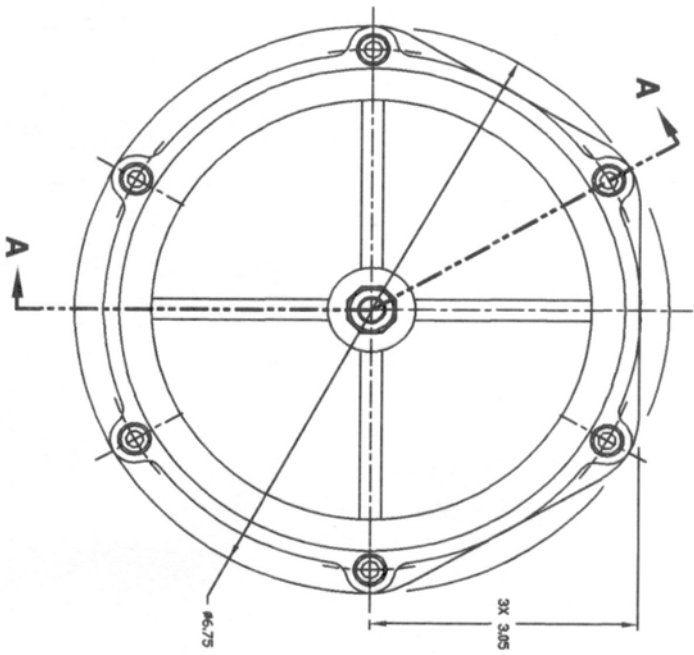


CAUTION		TOLERANCES UNLESS OTHERWISE SPECIFIED		MATERIAL		COMPUTER GENERATED		HARD COPY	
READ ALL NOTES	DECIMALS	X	AS	-	-	RESTRICTED	RESTRICTED	NO SCALE	NO SCALE
STRAIGHT SLOPE	XX	± .05	AS	HEAT TREAT	-	DOCUMENT CONTROL NUMBER	129204DA.DWG	DATE	27 JANOS
REWORK ALL DIMENSIONS	XXX	± .10	AS	-	-	APPROVALS		DATE	27 JANOS
DO NOT SCALE	XXXX	± .20	AS	-	-	BROWN R/FISTE		DATE	27 JANOS
	XXXX ± .20	± .20	AS	-	-	S/D/DECKARD		DATE	27 JANOS
	± .20	± .20	AS	-	-	DATE		DATE	27 JANOS

TECH DEVELOPMENT
8800 Poe Avenue, Dayton, OH 45414

T100 SERIES EXHAUST DEFLECTOR KIT

SIZE: C
CAGE CODE: 57301
DWG NO: 29204

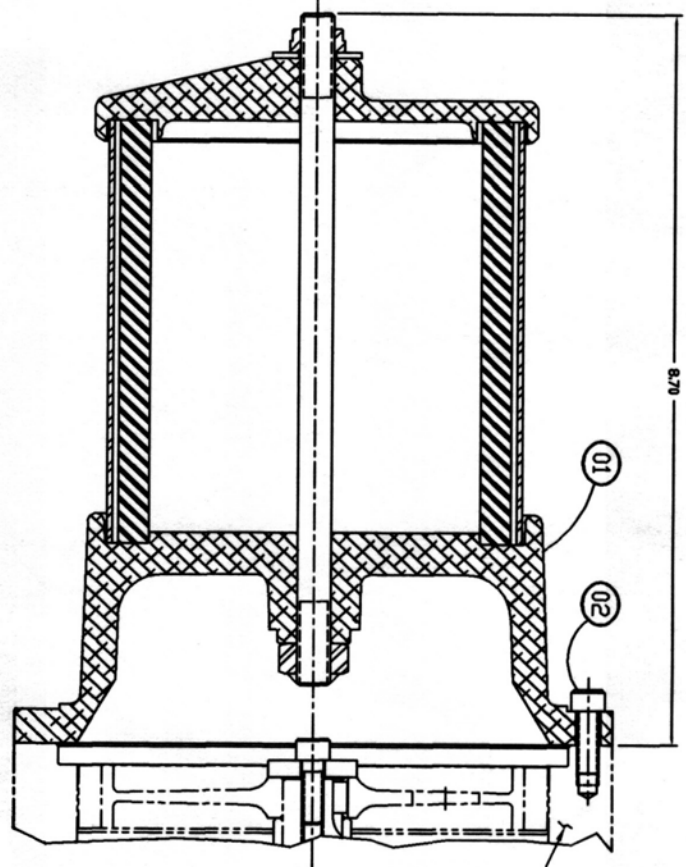
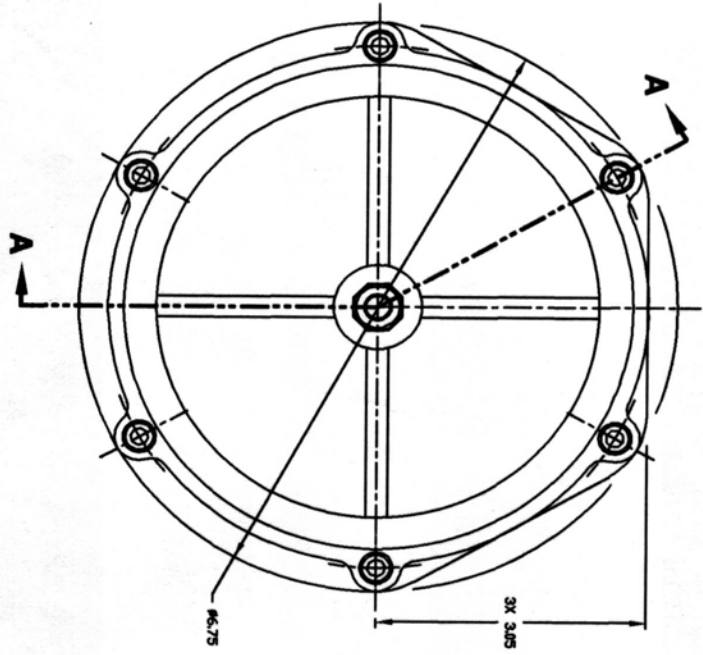


SECTION A-A

QTY/RECD	BASIC NUMBER	DESCRIBE PART	IDENTIFYING NUMBER	QUANTITY	MATERIAL/SPECIFICATION	DRAWING SIZE AND NUMBER	ITER
6	14F-29020-012	SCREW				A-52301	02
1	2-27073-001	MUFFLER				D-27073	01
-	T100-27074	MUFFLER KIT				C-27074	-

CAUTION READ ALL INSTRUCTIONS BEFORE OPERATING THIS EQUIPMENT. FAILURE TO FOLLOW THESE INSTRUCTIONS MAY RESULT IN PERSONAL INJURY OR DEATH.		REVISIONS REVISION NO. DATE BY 1 12/20/96 R.F.S. 2 03/04/98 S/RAV/LNS 3 03/04/98 S/RAV/LNS		APPROVALS DESIGNED BY: R.F.S. CHECKED BY: S/RAV/LNS DATE: 12/20/96		TECH DEVEL OPMENT, INC. 1000 Peachtree Avenue, N.W. Atlanta, GA 30309	
THIS DRAWING CONTAINS PROPRIETARY SUBJECT MATTER. IT IS NOT TO BE USED OR REPRODUCED IN WHOLE OR IN PART IN ANY MANNER WITHOUT THE EXPRESS PERMISSION OF TECH DEVEL OPMENT, INC.				DRAWN BY: S/RAV/LNS DATE: 12/20/96		SCALE: 1/1 SHEET 1 OF 1	

CAUTION				REVISION				DRAWING				
PART NUMBER	USED ON	NEXT ASSEMBLY	QTY	DATE	REV	DESCRIPTION	ISSUED	APPROVED	DATE	ISSUED	APPROVED	DATE
T100-27073	T100/52	-	1	-	-	RELEASED PER EN 5770	-	-	-	-	-	-



SECTION A-A

QTY/REGION	PART NUMBER	IDENTIFYING NUMBER	DESCRIPTION	MATERIAL/SPECIFICATION	DRAWING SIZE AND NUMBER	ITER
6	14F-29820-012		SCREW		A-29201	02
1	2-27073-002		MUFFLER		D-27073	01
-	T100-27073		MUFFLER KIT		C-27073	-
BASIC			NUMERICALS OR			
			DESCRIPTION			

CAUTION		REVISION		MATERIAL/SPECIFICATION		DRAWING SIZE AND NUMBER	
REVISION	DATE	DESCRIPTION	DATE	ITER	ITER	ITER	ITER
1	15NOV96	RELEASED PER EN 5770					

THIS DRAWING CONTAINS PROPRIETARY SUBJECT MATTER. IT IS NOT TO BE USED OR REPRODUCED WITHOUT THE WRITTEN PERMISSION OF THE ISSUING OFFICE.

MDI TECH DEVELOPMENT, INC.
 4500 Park Avenue, Dayton, OH 45424
 937-233-7777

PART TITLE: MUFFLER
 INSTALLATION/ASSEMBLY DRAWING

DATE: 57301
 DRAWING NO: 27075